



LINA Baby blanket

S11337





S11337

V.1/CH

LINA

Baby blanket

Design: Schachenmayr Designteam

1 Crochet

2 Easy



Recommended Yarn

SIZE

Approx. 50 x 55 cm

MATERIALS

Schachenmayr Bravo Happy Color, 150 g/ball

Approx. 150 g ≈ 399 m

Col. 02079 (blossom color)

1 ball

The amount of yarn needed can vary from person to person.

1 crochet hook 3.5 mm

1 tapestry needle for weaving in ends

GAUGE

Crochet Pattern:

26 st and 9 rows = 10 cm x 10 cm

If your gauge differs from the given gauge, use crochet hook of a larger or smaller size accordingly.

THE BASICS

Crochet Pattern:

Work according to the chart in rows. Begin each row with 3 ch for the 1st dc. Read right side stitches from right to left; wrong side stitches from left to right. Begin with the st before the pattern repeat. Repeat the 4 st of the pattern repeat between the arrows and end with the st after the pattern. Repeat once at the height of the 1st – 4th rows and then repeat the 3rd and 4th rows. In the 1st row work the dc in the beginning ch and from the 2nd row work the dc around the ch of the previous row.

INSTRUCTIONS

Ch 115 and work the first 3 dc in the 8th ch from hook.

Continue working according to the chart working the pattern repeat 13 times per row.

The blanket is finished after 49 cm.

FINISHING

Dampen and block the blanket, and allow to dry.

Work 1 rnd sc around the blanket starting with 1 sl st and 2 ch for the 1st sc.

Work 3 sc in one insertion point in the corners and close the rnd with 1 sl st in the top 2 ch.

Fasten off all the threads within the same color area.

TIP

For a larger blanket of approx. 80 x 80 cm we recommend to use 2 balls and then cast on 166 ch.

ABBREVIATIONS

st = stitch

sc = single crochet

sl st = slip stitch

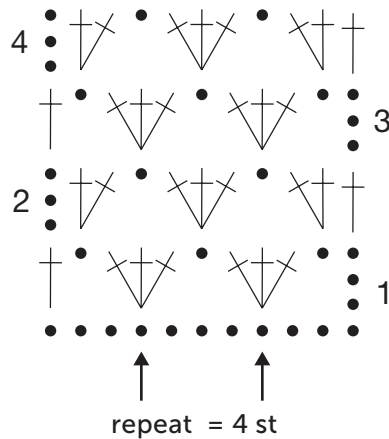
ch = chain

dc = double crochet

st(s) = stitch(es)

rnd(s) = round(s)

CHART



KEY

● = 1 ch

† = 1 dc

† † = work in the same insertion point per 2 dc or work around the ch of the previous rnd

† † † = work in the same insertion point per 3 dc or work around the ch of the previous rnd